



# WARRIOR



Q1-0357



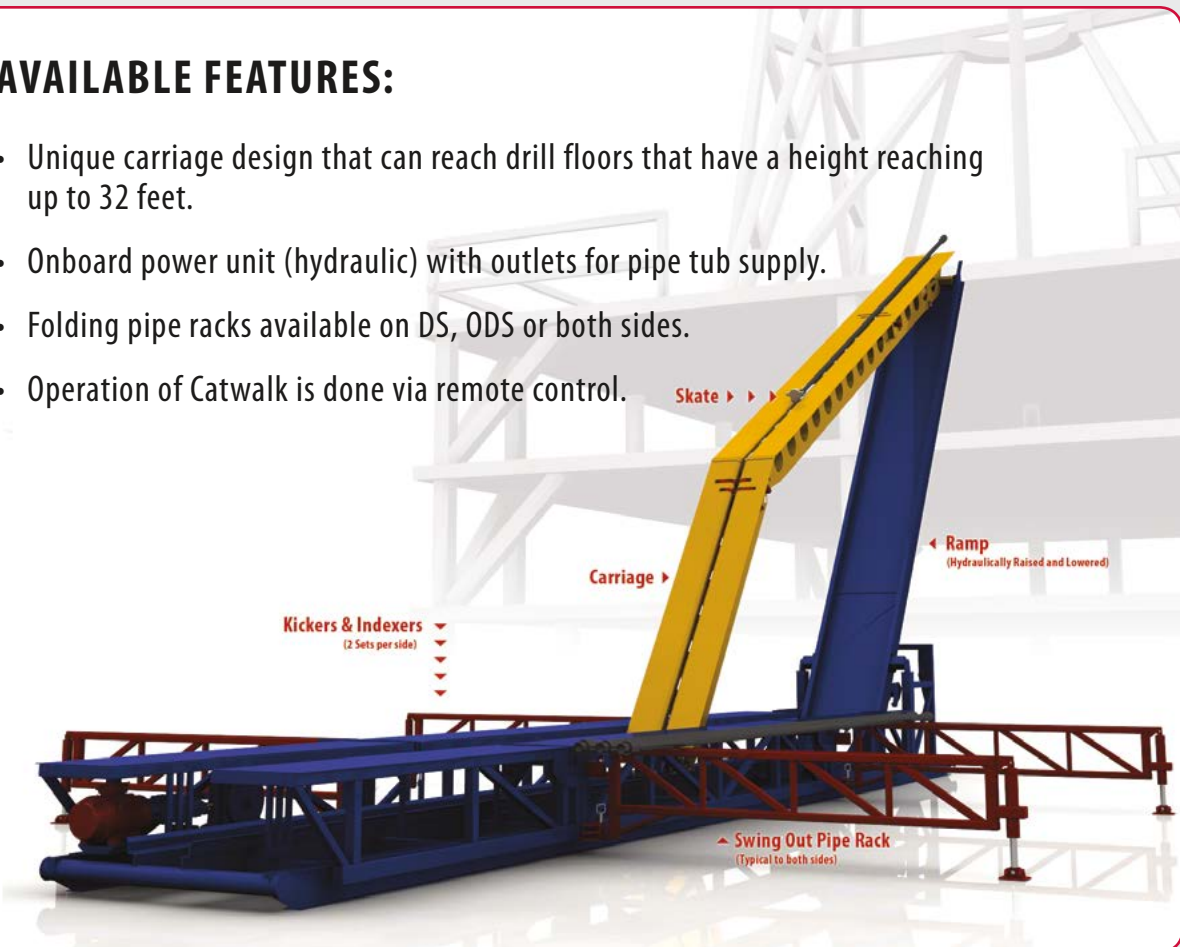
8C-0136

## POWER CATWALK

Warrior Manufacturing Services is proud to offer our customers our new Power Catwalk. The catwalk has a variety of operating features and benefits that are designed to allow an efficient way of running tubulars, drill collars, and casings up to the drill floor while providing a level of safety by reduced handling of materials in an area that typically contains a large number of safety issues. Warrior's Power Catwalk has been designed and manufactured to offer the customer the greatest ease of use, while still maintaining the highest level of efficiency.

### AVAILABLE FEATURES:

- Unique carriage design that can reach drill floors that have a height reaching up to 32 feet.
- Onboard power unit (hydraulic) with outlets for pipe tub supply.
- Folding pipe racks available on DS, ODS or both sides.
- Operation of Catwalk is done via remote control.



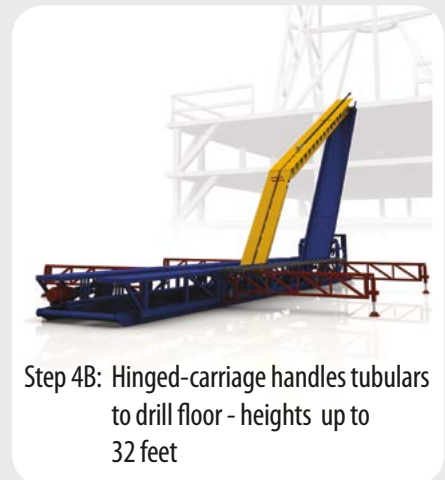
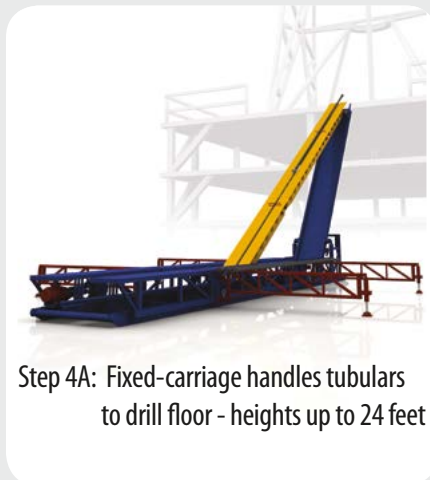
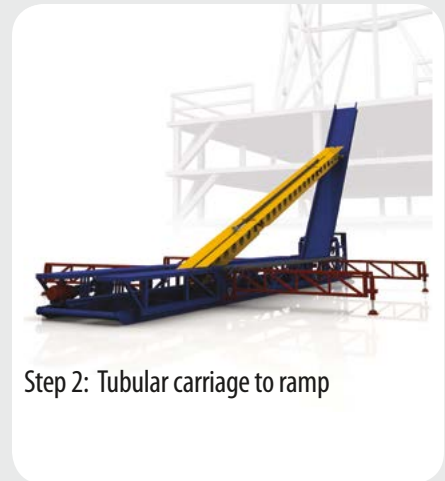
[www.warriorrig.com](http://www.warriorrig.com) • [sales@warriorrig.com](mailto:sales@warriorrig.com)

1515 - 28 Street N.E., Calgary, Alberta, Canada T2A 3T1 • Phone 403.291.6444 • Fax 403.291.6424  
2409 S. Purdue Avenue, Oklahoma City, OK 73128 • Phone 800.994.1172 • Fax 405.813.6707  
Suite 19D Kunigan, Jln.HR. Rasuna Said Kav. 20. Jakarta Selatan 12940, Indonesia • +62.21.238.20000

# WARRIOR POWER CATWALK SPECIFICATIONS

ITEM	CAPABILITY
Tubulars	Range 2 and 3
Carriage and Skate Speed	2 Feet/Second
Width	10-ft (8-ft at skid)
Length	60-ft
Catwalk height	42-Inches
Max Tubular Weight	10,000-lbs

## CATWALK OPERATIONAL SEQUENCE:



[www.warriorrig.com](http://www.warriorrig.com) • [sales@warriorrig.com](mailto:sales@warriorrig.com)



1515 - 28 Street N.E., Calgary, Alberta, Canada T2A 3T1 • Phone 403.291.6444 • Fax 403.291.6424  
 2409 S. Purdue Avenue, Oklahoma City, OK 73128 • Phone 800.994.1172 • Fax 405.813.6707  
 Suite 19D Kunigan, Jln.HR. Rasuna Said Kav. 20. Jakarta Selatan 12940, Indonesia • +62.21.238.20000